

Installation Guide

RJ45 SFP Module

©2025 TP-Link 7100001470 REV3.0.1

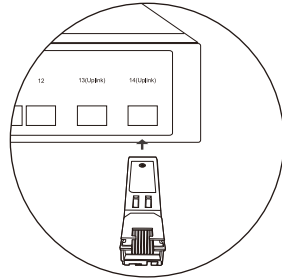
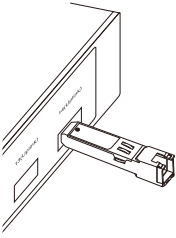
For technical support, replacement services, user guides, and more, please visit <https://support.omadanetworks.com/>, or simply scan the QR code.



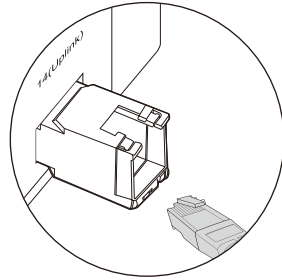
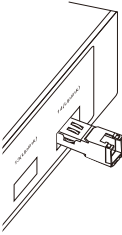
Note: Images may differ from the actual products.

Installing the RJ45 SFP / RJ45 SFP+ Module

1. Lock the yellow latch into place and insert the module into an SFP/SFP+ slot with the label side up.

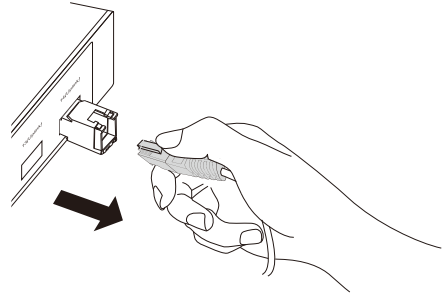
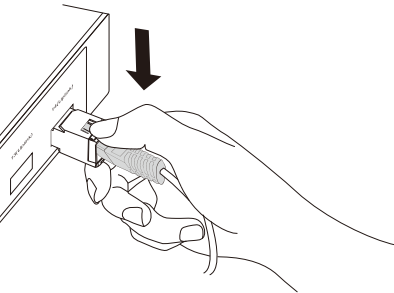


2. Gently push the module into the slot until you hear a click. Then, insert the RJ45 network cable.

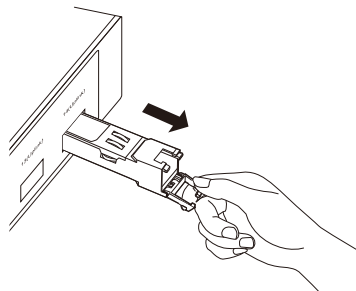
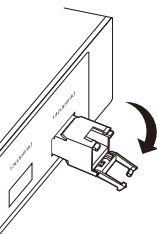


Removing the RJ45 SFP / RJ45 SFP+ Module

1. Press the RJ45 crystal head and pull out the cable.



2. Pull down the latch and remove the module.



Positioning the 10G RJ45 SFP+ Modules

The 10G RJ45 SFP+ modules consume more power than optical modules. This may generate more heat. To avoid overheating, it is recommended to place the modules separated by multiple optical transceivers or empty slots. When used in high temperature environments, additional cooling must be applied.

The figures below only show the recommended positioning. The actual number of modules that can be inserted depends on the switch's heat dissipation and power margin.

Scenario 1:

